



Schrack SLZ/BLZ Integral.

Systematic flexible security.

FIRE ALARM

www.schrack-seconet.com

SCHRACK
S E C O N E T

Schrack SLZ/BLZ Integral. Fire prevention with profile.



Control extinguishing systems.

Optimal fire prevention is a technical matter. Schrack Seconet has been contributing to minimising the risk of fire damage for many years, optimising smoke detector responsiveness and improving monitoring of areas at risk, thanks to its individual range of solutions. Schrack Seconet's fire alarm control panels are internationally renowned as being the best of the best, with their 100% redundancy singling them out from the competition. The SLZ Integral is a system that allows any current stationary extinguishing system to be controlled. Not only do we provide you with one of the world's best fire alarm systems, but we also provide you

with a matching reliable control system for your extinguishing systems.

The SLZ Integral.

The SLZ Integral is an automatic electronic control and delay unit and can control all current types of stationary fire extinguishing systems as a multiple zone extinguishing control unit. Thanks to this innovative further development in accordance with the requirements laid out in standards – the SLZ Integral is tested and approved in accordance with EN12094-1 and VdS 2496 – extinguishing systems can be controlled and monitored. The SLZ was developed in synthesis with the BMZ Integral. It is compatible with all Schrack Seconet fire alarm systems and therefore forms the perfect complement to an existing fire alarm control panel.

BLZ Integral – everything in a single device

There is also the possibility of an integrated system, in the form of the BLZ Integral,





which combines a fire alarm control panel and a control unit for extinguishing systems in a single device.

The BLZ Integral offers you the perfect combination of a fire alarm control panel and a controller unit. Up to 32 extinguishing zones can be controlled in accordance with standards thanks to the fully-redundant system concept. A feature which makes the system unique. This ensures cost-saving benefits both in the installa-

tion and in the maintenance of the entire system.

Compatible.

The SLZ Integral can be connected to existing fire alarm systems via standardised interfaces. Consequently, the system naturally adheres to the current standards and regulations, such as European Standard EN 12094-1 or VdS directive 2496.



Schrack SLZ/BLZ Integral.

The security network grows to meet requirements.



Tailor made.

To ensure the best possible fire prevention solution, it is important to examine the customer's requirements. What are the spatial requirements? What particular prevailing local conditions need to be taken into consideration? What special requests and requirements are there for product deployment?

What are the individual requirements regarding the extinguishing system's features? Schrack Seconet offers security technology that is made to measure to fit your requirements. Our flexible modular technology allows us to do so.

Networkable.

The extinguishing systems in the Integral family of systems can also be networked with one another. The SLZ/BLZ Integral can handle the most recent requirements thanks to its redundant construction.



Consequently, and regardless of the type of extinguishing system, eight independently functioning extinguishing zones can be controlled. Dependent on the type and size of the system, up to 32 extinguishing zones can be controlled from an Integral sub control unit loop. In larger buildings, it is often necessary to connect the fire alarm and extinguishing system control panels to a super-ordinated management system. The Integral Standard Protocol allows more



simplified installation and also clear operation. The necessary maintenance work also can be carried out more economically if a multi-system solution is deployed. The Integral system family can be extended to include additional sub control units due to its modular construction. Schrack Seconet also offers you complete backward compatibility with all previously

developed systems. For you, this means that there are no extra costs for adapting the system, when modernising and extending existing systems. Quality, Flexibility and Compatibility – characteristics of our products, which ring true regardless of which version you ultimately decide to choose.

or less any system to be connected, and permits, if required, complete communications for controlling and signalling between fire alarm control panels and management systems.

Cost savings.

A fire alarm control panel and electronic controlling device for stationary extinguishing systems from the same manufacturer, or even in a single compact system equates to cost savings, less space required,



Schrack SLZ/BLZ Integral. Logged Security.



Certified.

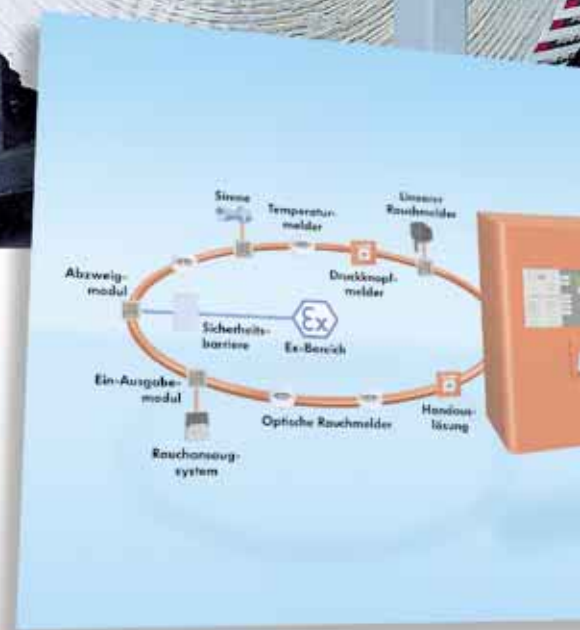
The SLZ Integral has been certified by the German "Verband der Schadenverhütung" (VdS), a globally recognised testing centre for fire alarm systems and security technology. The seal of quality is valid both for use in automatic fire alarm systems, for fixed gas, high pressure, low pressure, inert

gas extinguishing systems as well as for water extinguishing systems.



Universally deployable.

Regardless of whether a chemical factory, an office block, a hospital or a warehouse, the SLZ Integral can be deployed in any location. Its flexible usage makes it suitable for the following types of stationary extinguishing systems:



- CO₂ – high & low pressure systems
- Inert gas and argon systems
- Water spray systems
- Pre-action sprinkler systems
- Sprinkler Systems
- Mist water spray systems

Independent of where is being used – in printing presses, computer rooms, air traffic control, high rise stores, control rooms, paint spraying systems, motor testing centres or stores for dangerous



goods – the highest level of security is always guaranteed.

Automatic State Monitoring.

There is a system built in for automatically monitoring the state of extinguishing agents. Are the extinguishing agent containers full? Is the extinguishing agent OK? Is the pressure correct? The SLZ Integral knows the answers to these questions and therefore ensures that

your extinguishing system is capable of functioning on a physical level. Furthermore, the system permits monitoring and indication of the extinguishing systems' locking mechanisms between the "Open" and "Closed" states. It is therefore possible to ensure that none of the extinguishing agent is leaking out, and that it is available as quickly as possible in the event that it is needed.

Modular.

Regardless of the type of extinguishing system being used, up to eight different extinguishing zones can be controlled. According to the size and type of the system, up to 32 extinguishing zones can be controlled from a single Integral sub control unit loop, based on the options that have been chosen. The system components can be concentrated in a single location or can be distributed between several subcontrol units.

Adaptable.

Many companies operations are carried out under increase environmental influences. Damp and dust are frequently encountered in day-to-day work. Even when faced with such conditions, the SLZ Integral carries on functioning fully. The control panel can be fitted with an IP55 protection class cabinet, so that it can resist the extreme conditions that the environment subjects it to.



Schrack SLZ/BLZ Integral.

Our technology offers doubled security.



Reliable.

Redundancy. If there is one characteristic of Schrack Seconet products which safety experts value in particular, it is their reliability. The tried and tested technology used in fire alarm systems was also used for the SLZ/BLZ Integral electronic control and delay unit. In the BLZ Integral and the SLZ Integral, all components are set out in redundant system architectures.

Double lasts longer.

All the components, electrical elements and the system bus are present in duplicate in the SLZ/BLZ Integral. If a fault occurs in the system, then the SLZ/BLZ Integral

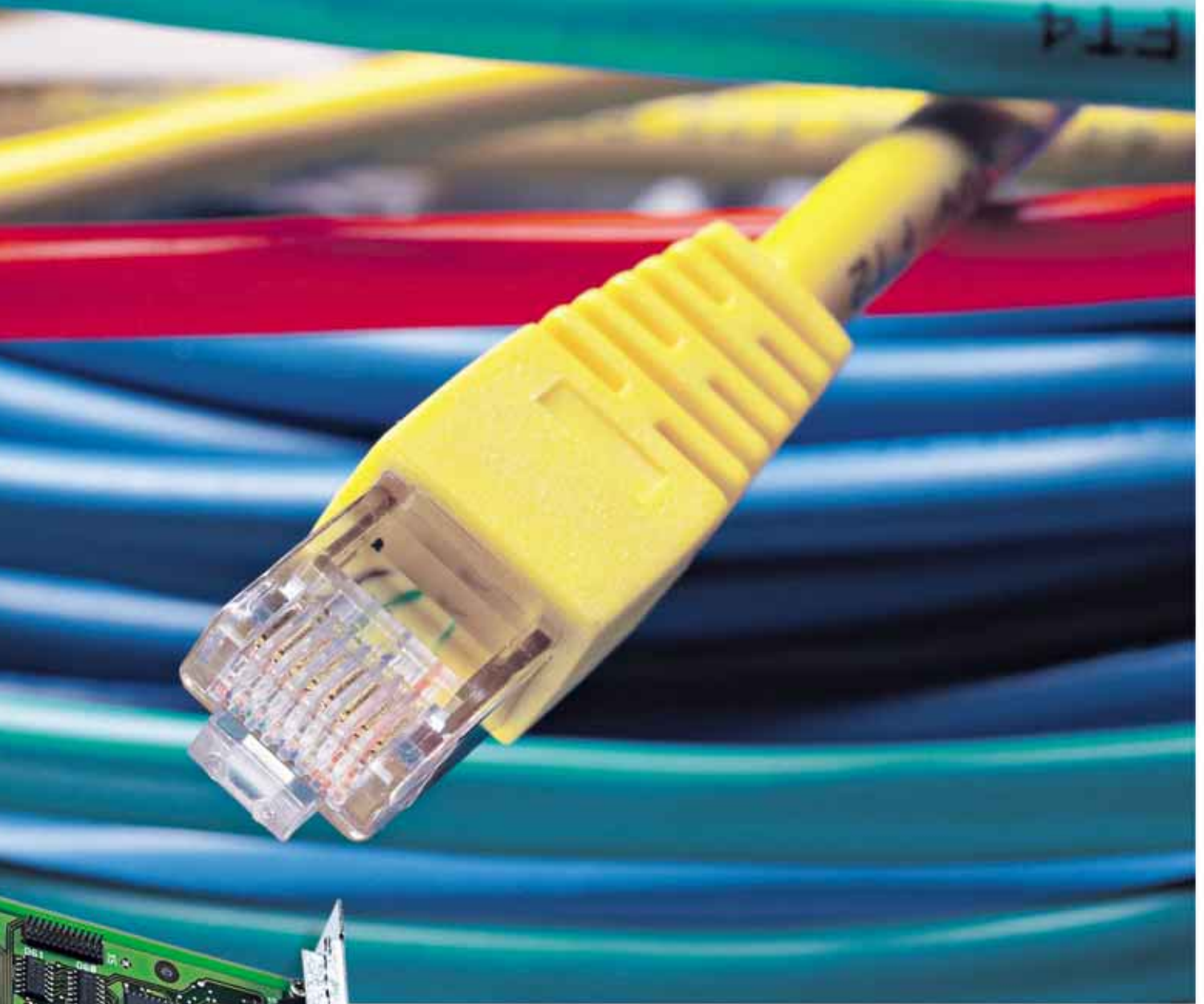
recognises that there is a fault straight-away and automatically switches over to the half of the system which is ready for use. This particular characteristic allows the system to sustain multiple faults, without its ability to function properly being affected. This unique technology offers you a decisive advantage in terms of safety.

Schrack Seconet fire alarm and extinguishing control panels are therefore ready for use when it matters – in crisis situations!

Self-Testing.

You don't need to wait for a crisis situation to occur to be convinced of the SLZ/BLZ Integral's reliability. The system carries out self-test routines at regular intervals. Possible sources of faults are thereby recognised automatically at an early stage. This preventative measure ensures that the SLZ/BLZ Integral remains completely functional around the clock. This is an extra effect which should not





be neglected. Expensive deceptive alarms and deceptive triggering of systems are a thing of the past thanks to this unique technology.

Versatile.

Due to its fully-redundant construction, the SLZ/BLZ Integral is suitable for receiving processing and signalling of signals from more than just a single

extinguishing zone.

According to EN 12094-1 only a single extinguishing zone is allowed to fail in the event of a simple error. This means that the redundant system can monitor and control up to 32 extinguishing zones.

Furthermore, a built-in printer in the system describes and logs the most important events.



Schrack SLZ/BLZ Integral. Plain text offers peace of mind.



Simple to operate.

Technology must serve people.

It should adapt to their requirements –

and not vice versa. For Schrack Seconet, this is the tenet when developing new products – regardless whether hardware or software. In particular, where the health and safety of human beings is at stake, then the operating process should be easy to understand. We have therefore placed a lot of value on the optical styling of the SLZ Integral, that our technology can be operated intuitively.



Everything at a glance.

The high-end operating panel with its large colour display displays all important information at a glance – clearly laid out and on a large colour display. Schrack Seconet offers you the ideal interface for your extinguishing system control panel. There are different authorisation levels for

CHBEREICH 5
GELÖST
2 000 000 012

me Störungen Abschaltungen Auslösungen

1 2 3
5 6
8 9
- /



Zusatzinfo

Menü

Druck
wiederholen

Ein

Ab

Setzen
Rücksetzen

Weitere
Befehle

- Betrieb
- Störung
 - System
 - Batterie
 - Netz
- Abschaltung
- Revision
- Service rufen
- Anzeigetest
- Berechtigung



each operating panel, which the range of functions assigned to each level being separately programmed. An LED indicator tableau is installed underneath the operating panel. The LEDs can be programmed individually according to extinguishing system types as required. Consequently the status of every extinguishing zone which its connection is visible straightaway.

Key switch.

The key switch is a fixed component of the indicator panel.

It allows all the extinguishing zones to be simultaneously manually set into revision mode.

Logged.

Internal and external log printers log every event, with date and time in fractions of a second. The printer's event log memory automatically saves all events.

Every incident – e.g. an alarm, fault or error is recorded immediately, with date and time. If the data is evaluated at a later point, there is also the possibility of printing the log entry again if required. You can always obtain an overview at any time about the operating state of the SLZ/BLZ Integral.

International.

The SLZ/BLZ Integral is an European product – developed by European technicians, produced by European companies

and successfully deployed throughout Europe.

The SLZ Integral also satisfies the highest standards in terms of language compatibility. From the display down to menu navigation, the system is able to communicate in almost all languages in the world. Even the LEDs on the indicator tableau can be individually labelled as required.



Schrack SLZ/BLZ Integral.



SLZ/BLZ Integral Cabinet: 600 x 445 x 225 mm (H x W x D)



External operating panel: 230 x 445 x 35 mm (H x W x D)

External indicator panel for 8 extinguishing zones.
230 x 445 x 48 mm (H x W x D)



External operating panel with printer: 360 x 445 x 45 mm (H x W x D)

Permissible Ambient Temperature: 0-40°C

Colour: Red RAL 3000

SCHRACK SECONET AG

Headquarter Austria: A-1122 Vienna, Eibesbrunnergasse 18 • Tel.: +43-1-81157-0 • office@schrack-seconet.com

Technical support Fire Alarm Systems Tel.: +43-1-81157-570 • Technical support Health Care Systems Tel.: +43-1-81157-525

Branch offices Austria:

A-6850 Dornbirn, Sebastianstraße 13a • Tel.: +43-5572-51199-0

A-8055 Graz, Neuseiersberger Straße 157 • Tel.: +43-316-407676-0

A-6021 Innsbruck, Valiergasse 56 • Tel.: +43-512-365366-0

A-9020 Klagenfurt, Feldkirchner Straße 138 • Tel.: +43-463-429362-0

A-4060 Leonding-Hart, Kornstraße 16 • Tel.: +43-732-677900-0

A-5020 Salzburg, Vogelweiderstraße 44a • Tel.: +43-662-887122-0

Czech Rep. • CZ-100 00 Prag 10, V Úžlabíně 1490/70 • Tel.: +420-2-74784422

Hungary • H-1119 Budapest, Fehérvári út 89-95 • Tel.: +36-1-4644300

Poland • PL-02-583 Warschau, ul. Woloska 9 • Tel.: +48-22-3300620-23

Russia • RU-129626 Moskau, Ul. Staroalexejevskaja 5 • Tel.: +7-495-510 50 15

Slovakia • SK-83003 Bratislava 33, P.O. Box 31, Odborárska ul. 52 • Tel.: +421-2-44635595

Sweden • SE-141 75 Kungens Kurva, Månskärsvägen 9 • Tel.: +46-8-680 18 60

Turkey • TR-34 722 Kadiköy-Istanbul, Sokak no.: 5/12 • Tel.: +90-216-345 51 99

Partner in

FIRE ALARM

www.schrack-seconet.com

SCHRACK
S E C O N E T